



*Rely on it.*

# RENOLIT ALKORCELL

## Product- and Processing Information

Get the most out  
of the wide-  
ranging possibilities  
from RENOLIT  
ALKORCELL.





# RENOLIT ALKORCELL – SURFACE COATING FOR FURNITURE AND INTERIOR DESIGN

## RENOLIT ALKORCELL – GENERAL DESCRIPTION

RENOLIT ALKORCELL is a decorative film based on polypropylene (PP). Its surface is protected against abrasion and scratches by a transparent thermosetting varnish. The reverse side of RENOLIT ALKORCELL is coated with a primer for easy application. The standard thickness varies between 0.10 mm and 0.20 mm, depending on application and design.

RENOLIT ALKORCELL was developed around 40 years ago with the aim of combining various advantages. The result was a new, revolutionary material:

- Resistant to water, damp and mould
- Flexible
- Free of formaldehydes and heavy metals
- Provides a barrier effect against formaldehyde

RENOLIT ALKORCELL is a green product through and through with impressive physical properties, which can be easily processed on conventional machines of the wood processing industry.

A surface coating material must not only be able to be produced efficiently, but it must also be adaptable to meet customers specific aesthetic requirements. When considering the suitability of a product, properties such as print design, colour, texture and finish must all be considered.

### RENOLIT ALKORCELL

- High-quality design
- Simple and wide-ranging applications
- Environmentally friendly
- Barrier function
- Mould resistance

### PP-Film

RENOLIT ALKORCELL is a decorative thermolaminate based on PP. It is aesthetically defined via embossing and printing. This is what makes RENOLIT ALKORCELL uniquely different from paper or CPL, for example.

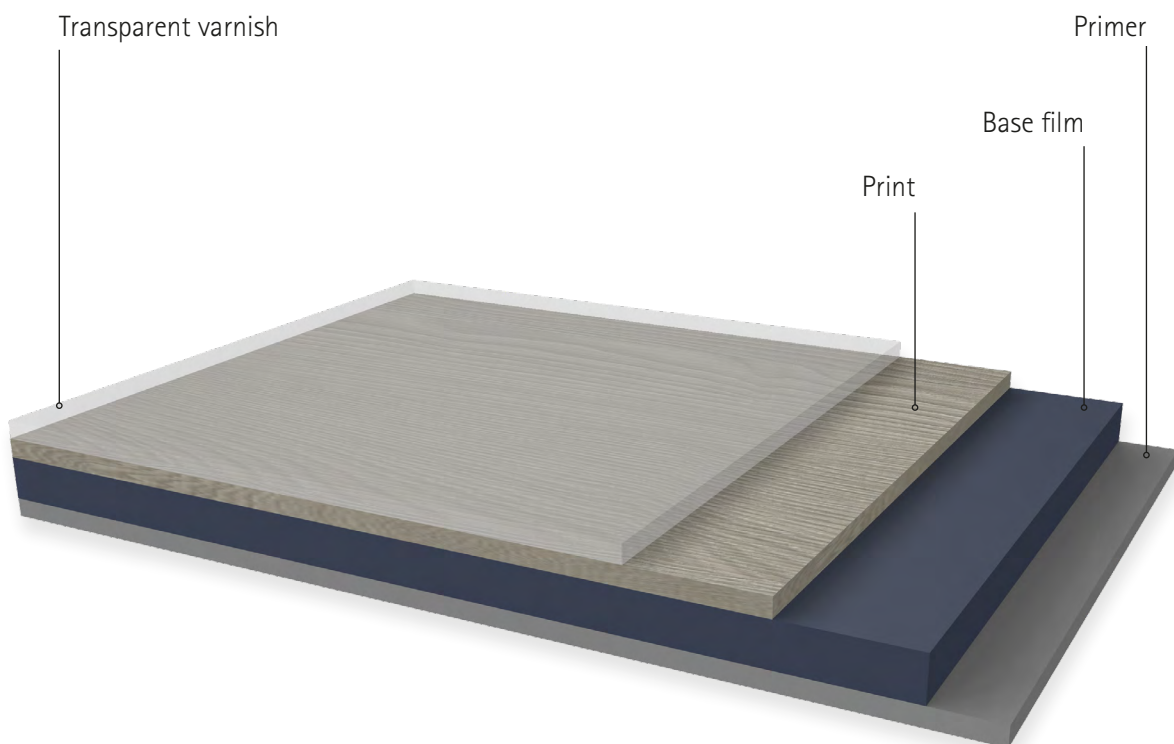
### Product structure

RENOLIT ALKORCELL has a single-layer structure. The surface is protected against abrasion, scratches and chemical influences by a transparent varnish. The back side is coated with a primer.

### Thickness

The standard thickness of RENOLIT ALKORCELL varies between 0.10 mm and 0.20 mm depending on application and design.

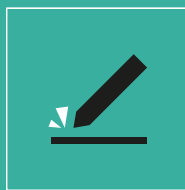
## RENOLIT ALKORCELL – PRODUCT DESIGN AND PROPERTIES



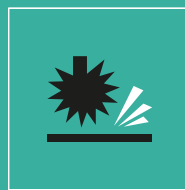
# RENOLIT ALKORCELL – PROPERTIES AT A GLANCE

RENOLIT ALKORCELL convinces with its versatile properties. The film has a barrier effect against water vapour and formaldehyde. The thermolaminate is ideally suited for the production of high-quality surfaces due to its properties:

## TECHNICAL CHARACTERISTICS



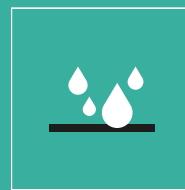
Scratch Resistance



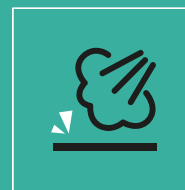
Abrasion Resistance



Chemical Resistance



Waterproof



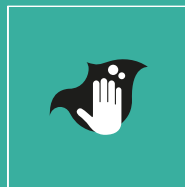
Vapor Resistance



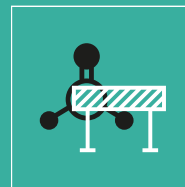
Mold Resistance



Light Resistance



Easy to Clean



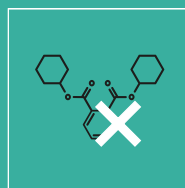
Barrier against Formaldehyde



Free of Formaldehyde



Free of Halogen Components



Free of Plasticizers

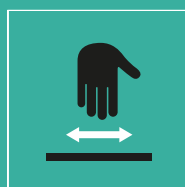
## DECORATIVE PROPERTIES



Variety of Designs



Deep Embossing\*

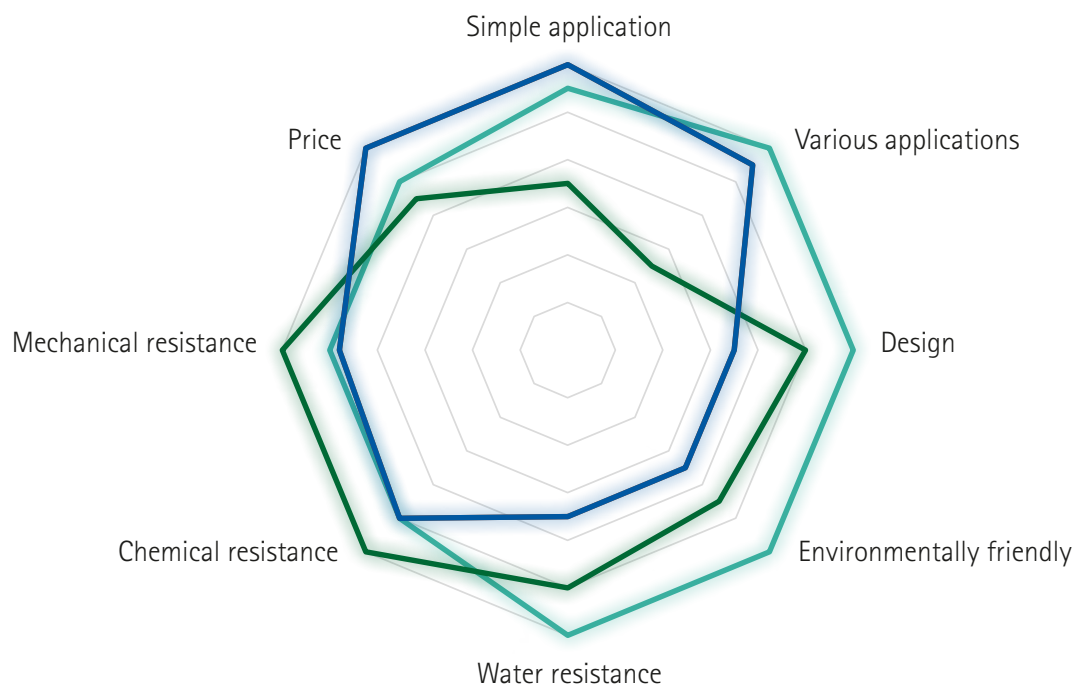


Soft-Touch Surface\*

\* depending on the product (product overview see page 8)

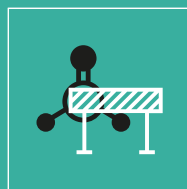
## COMPARISON WITH CPL AND FINISH FILM

— RENOLIT ALKORCELL | — CPL | — FINISH FILM

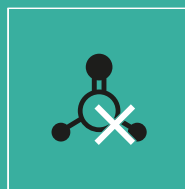


## RENOLIT ALKORCELL SUSTAINABILITY ARGUMENTS

RENOLIT ALKORCELL is a 2D film, based on polypropylene. RENOLIT ALKORCELL films are environmentally friendly in their production, processing and waste. Based on their formulation, RENOLIT ALKORCELL films convince with the following sustainable properties:



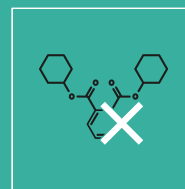
Barrier against Formaldehyde



Free of Formaldehyde



Free of Halogen components



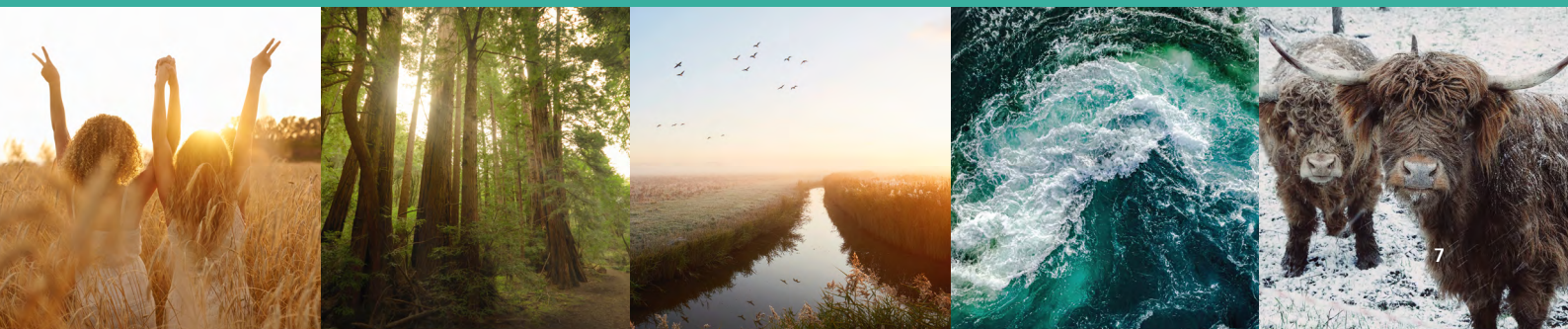
Free of Plasticizers

Our compelling arguments for sustainability make RENOLIT ALKORCELL films perfect for interior use. Being formaldehyde-free and working as a barrier against formaldehyde at the same time, they contribute to clean air – be it inside a home or caravan. Additionally RENOLIT ALKORCELL films are free of halogen components and free of plasticizers, which is another argument for their sustainability and their safe use inside living areas.

We continuously strive to improve our products and processes to be more sustainable. Please don't hesitate to ask us about our current options for sustainable products.

Notice:

Available on request: RENOLIT ALKORCELL with post-consumer recyclate as raw material.



## RENOLIT ALKORCELL PRODUCT OVERVIEW

RENOLIT ALKORCELL – Product portfolio			Developments
RENOLIT ALKORCELL Standard	RENOLIT ALKORCELL Phono	RENOLIT ALKORCELL Premier Matt	RENOLIT ALKORCELL Anti-Slip
RENOLIT ALKORCELL Stereoprint	RENOLIT ALKORCELL Master Emboss	RENOLIT ALKORCELL'	RENOLIT ALKORCELL Anti-bac
RENOLIT ALKORCELL Ecofilm	RENOLIT ALKORCELL SuperMatt		RENOLIT ALKORCELL ILS
RENOLIT ALKORCELL Nature	RENOLIT ALKORCELL ISR		RENOLIT ALKORCELL IFR
RENOLIT ALKORCELL Master Emboss Synchro	RENOLIT ALKORCELL Surrounding		

All products are available as customised solutions - on request

## DELIVERY OPTIONS

Stock range:	
Standard width:	1.260 mm, 1.300 mm, 1.400 mm
Standard thickness:	100 my, 120 my, 150 my, 180 my
Standard roll length:	300 lfm, 400 lfm, 500 lfm, 550 lfm, 600 lfm, 650 lfm, 700 lfm, 800 lfm
Minimum order quantity for stock items:	1 pallet = 4 rolls
MTO:	
Width:	(Product-dependent)
Thickness:	100 – 200 microns
MTO:	5,000 m first delivery / 10,000 m follow-up order



## DESIGN FEATURES

### RENOLIT ALKORCELL – Stereo Print

The thermoformability of RENOLIT ALKORCELL after calendering gives excellent surface properties. The range of emboss options extends from „synthetic“ effects to wood structures. Recent developments in printing technology have resulted in designs that increasingly resemble their natural counterparts. Our specialist print and embossing technique is a particular technical innovation, in which the emboss structure and the printed design are perfectly matched - wood pores and grain are synchronised.

### RENOLIT ALKORCELL – MasterEmboss

With MasterEmboss from RENOLIT ALKORCELL, the saying „You get what you see“ applies to furniture surfaces. MasterEmboss makes visually rough surfaces feel pleasant to the touch by perfectly combining outstanding print quality and deeply engraved emboss.

#### **MasterEmboss – the process**

A realistic wood surface is achieved by re-embossing the foil or embossing it in the final operation.

#### **MasterEmboss Synchro**

This version is characterized by a perfect interplay of decorative print image and emboss. Here, embossing is synchronised with the print design. The result is a very natural looking decor with matching deep emboss.

### RENOLIT ALKORCELL – Premier Matt

With the new Premier Matt surface, RENOLIT ALKORCELL films reach a new level of surface finish. RENOLIT ALKORCELL Premier Matt films are finished with an exclusive physical surface treatment technology that combines intelligent technology, smart solutions, high-quality design and outstanding properties. The extremely matt aesthetic appearance creates a classic yet modern, contemporary finish.

## APPLICATIONS

INTERIOR  
DOORS



FURNITURE  
& INTERIOR  
DESIGN



CARAVAN



OUTDOOR  
KITCHEN



OUTDOOR  
FURNITURE



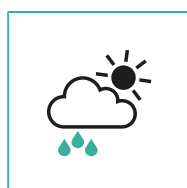
## NEW APPLICATIONS FOR RENOLIT ALKORCELL

### DEFIES ALL WEATHER CONDITIONS: RENOLIT ALKORCELL SURROUNDING

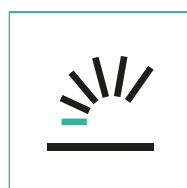
RENOLIT ALKORCELL Surrounding was especially developed for decorative surface design in outdoor applications. With RENOLIT ALKORCELL Surrounding, the RENOLIT ALKORCELL base film is supplemented by a weather-resistant top film. This makes RENOLIT ALKORCELL Surrounding a weather-resistant film that is suitable for wrapping and flat laminating weather-resistant surfaces.



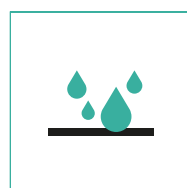
RENOLIT ALKORCELL Surrounding is ideal for all outdoor applications around the house, garden, terrace or balcony. The range of applications is as diverse as the film itself. Whether for the production of garden furniture, plant boxes or privacy screens, RENOLIT ALKORCELL Surrounding can be used in many ways and on all weather-resistant surfaces. In addition, the film impresses with its decorative appearance, which defies scratches, dirt, wind and weather for years.



Weather Resistance



Light Resistance

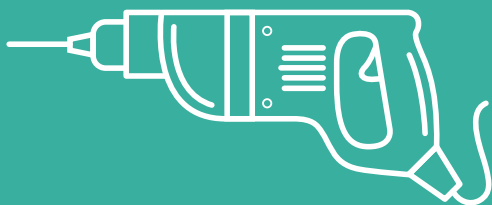
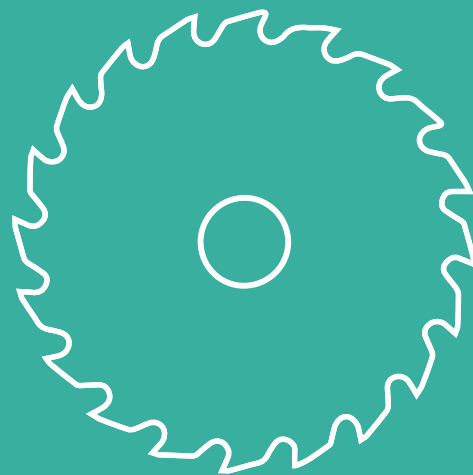
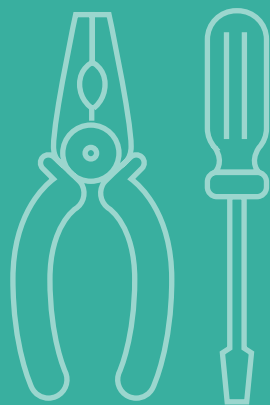


Waterproof



Stain Resistance

## PROCESSING INFORMATION



## FLAT LAMINATION

### Machine parameters

	Cold lamination	Thermal lamination
Production speed:	10 – 20 m/min	15 – 30 m/min
Temperature:	20 °C	80 °C – 120 °C
Adhesive application:	Roller	Roller

### Adhesives

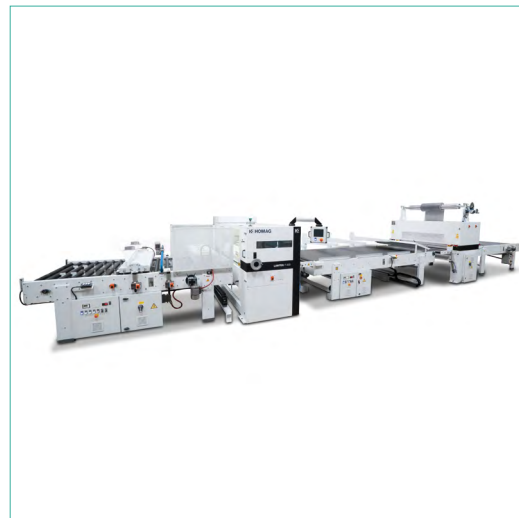
	PVAc EVA UV + curing agent	PVAc EVA UV + curing agent
Quality:	60 – 80 g/m <sup>2</sup> wet	40 – 60 g/m <sup>2</sup> wet
Bond strength after:	0.5 – 1 h with UF 3 – 5 h with PVAc	---

## TECHNIQUES

Two lamination techniques are possible for thermoplastic laminates: cold lamination and thermal lamination.

- **Cold lamination**  
Lamination process with temperatures around 20 °C (without heating).
- **Thermal lamination**  
PVC films reach the thermoplastic stage at temperatures of 40-60 °C, whereas for RENOLIT ALKORCELL (PP) this only begins at around 120 °C (see Vicat curve). This difference allows RENOLIT ALKORCELL to be processed at temperatures of 80-120 °C.

In contrast to cold lamination, hot roller lamination achieves a high bond strength during processing, even while the machine is running. Cutting to part size is immediately possible.

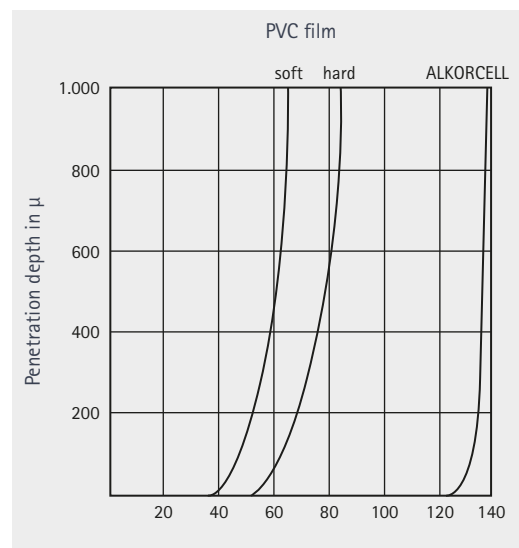


Roll laminating machine by HOMAG.

## FLAT LAMINATION

### VICAT CURVE THERMOPLASTICS

While PVC films reach the thermoplastic phase at temperatures of 40 - 60 °C, the thermoplasticity of RENOLIT ALKORCELL (PP) begins only at approx. 120 °C (see the Vicat curve). This difference allows RENOLIT ALKORCELL to be processed at temperatures of 80 - 120 °C. In contrast to cold laminating, the hot roll laminating system achieves a high adhesive bond strength during the machine cycle; a separation cut on partial widths can generally be made immediately.

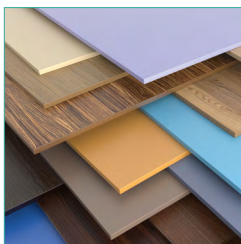


Vicat Curve

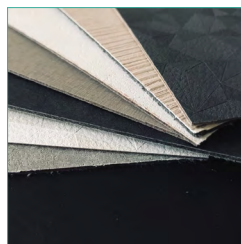
### ELONGATION:

A maximum elongation of 2% should not be exceeded in order to avoid the memory-effect. When laminating, make sure that the web tension is low. The same applies to profile wrapping.

## FLAT LAMINATION – SUBSTRATE



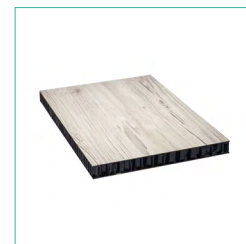
MDF, HDF, particle boards



WPC boards: e.g. RENOLIT WOOD-STOCK



Dry wall



Lightweight boards, e.g. RENOLIT GORCELL

Other possible applications:

- Bubble boards
- Expanded PVC foam
- and many other surfaces

## PROFILE WRAPPING

### Machine parameters

	Cold lamination
Production speed:	20 – 60 m/min and more
Adhesive application:	Roller, slot nozzle
RENOLIT ALKORCELL is a thermolaminate. It is therefore very important to monitor the expansion during lamination (max. 2%).	

### Adhesives

Hotmelts:	EVA (not filled) PO PUR
Quantity:	Approx. 80 g/m <sup>2</sup>

## AGGREGATES:

Different applications are possible depending on the equipment and machine settings. Almost every machine has a different design due to the configuration and the fitting of different components.

- Cleaning unit with rotating brushes for edges and surfaces
- Substrate preheating zone with infrared, radiant heaters or hot air
- Single or double unwinding for narrow width decorative films
- Glue application by slot nozzle or roller on the back of the film



Wrapping machines by Düsphol

## PROFILE WRAPPING

- Thermal protection shield against inadvertent melting of the film, only for the application of adhesive with an application roller (PVC films are not suitable for roller application due to its low softening temperature)
- Wrapping zone with additional hot air blower for smooth wrapping along the edges
- Cutting unit e.g. with a diagonal circular saw

## ELONGATION:

A maximum elongation of 2% should not be exceeded in order to avoid the memory-effect. When wrapping, make sure that the web tension is low.

## PROFILE WRAPPING – SUBSTRATE



MDF



Plastic profile



Particle board



Foamed PVC

Other possible applications:

- Solid wood
- WPC boards, e.g. RENOLIT WOOD-STOCK
- and many other surfaces



## 2.5D-THERMOFORMING WITH MEMBRANES

### Pressing parameters

Membrane temperature:	Approx. 110-120 °C	
Pressure:	4-5 bar	
Pressing time:	Preheating	50 – 90 seconds
	Pressing	30 – 70 seconds
	Cooling	20 – 30 seconds

RENOLIT ALKORCELL only permits 2.5D-Thermoforming – for example, for raised inserts.

### Adhesives

	2c-PUR (dispersion adhesive)
Application:	Spray the dispersion adhesive onto the workpieces. Twice in the profile area with short intermediate drying time.
Note:	Use of silicone membranes is advised



Thermoforming system by Bürkle

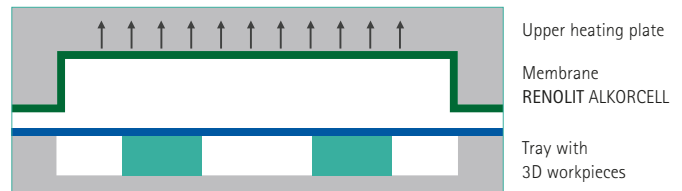


3D press by Wemhöner

## PROCESSING METHOD 2.5D-THERMOFORMING

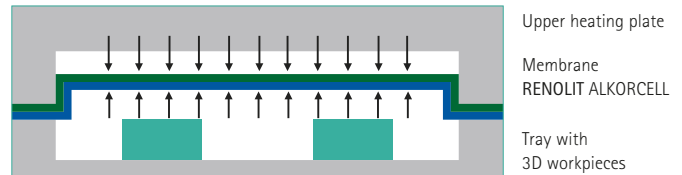
### Preparation

The press is opened and the membrane is pulled onto the upper heating plate by a vacuum for heating. The pallet and the workpieces are covered by the foil.



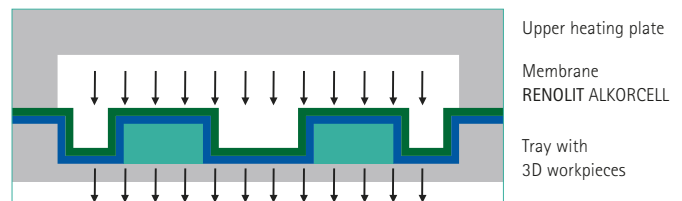
### Preheating

The press closes and hot compressed air separates the membrane from the heating plate. The foil, which is stretched between the positioning frame and the upper spacer frame, is pulled onto the membrane by a vacuum; it continues to be heated by hot air from the upper chamber.



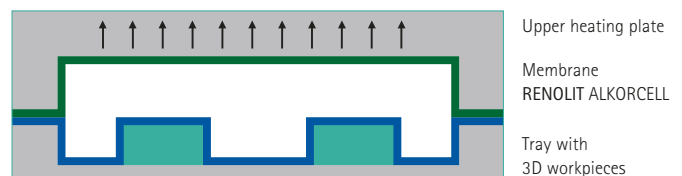
### Press process

A vacuum is produced in the lower chamber, and a simultaneous positive pressure in the upper chamber. The membrane presses the foil material onto the surface of the workpiece, and the heat passing directly through the membrane ensures that the adhesive is activated.



### Cooling

After the pressing process, the membrane is separated from the foil by cold air and pulled back onto the upper plate by a vacuum, where it is heated up again. The press opens and the ready-coated workpiece comes out.



# FOLDING



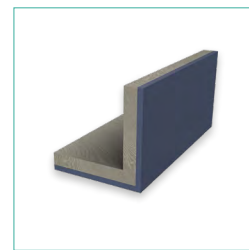
Laminated board



Milling one groove into only the substrate



Apply adhesive

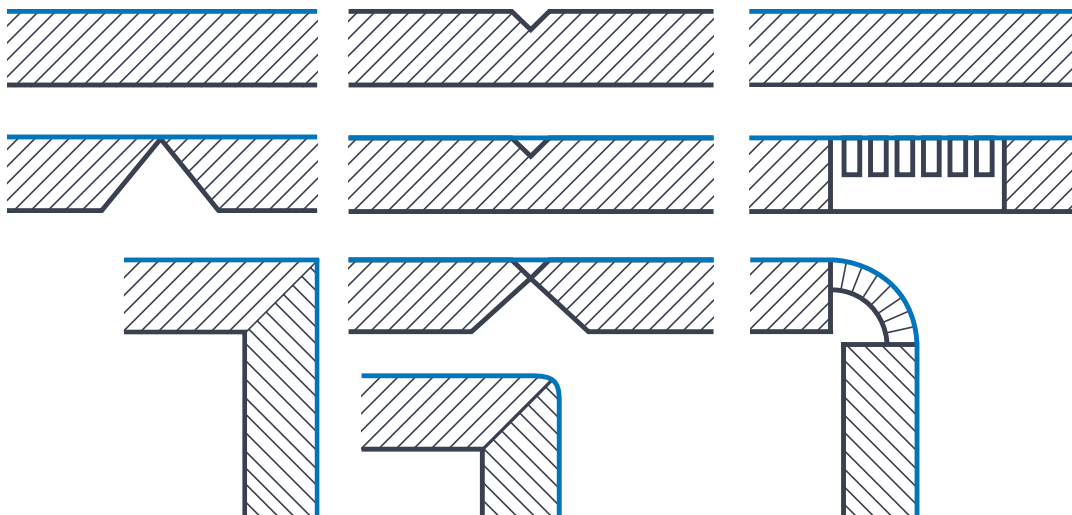


Folding

## Machine parameters

Production speed:	30-60 m/min
Mill a groove using a saw cut or form cutter.	

## Folding systems



## ADHESIVES

### PROFILE WRAPPING AND FLAT LAMINATION – TYPES OF ADHESIVES

#### Hot melt adhesives

Hot melt adhesives based on PUR, PO and EVA are used for both profile wrapping and flat lamination. Each of these has a different processing temperature:

- PUR hot melts: Between 120 °C and 140 °C. These adhesives are recommended for processing HG products.
- PO and EVA hot melt adhesives: EVA hot melts filled at 180 °C should not be used for profile wrapping due to their low heat resistance.

#### Dispersions (mainly flat lamination)

The standard film dispersion adhesive is based on EVA copolymer.

#### Solvent-based adhesives

Solvent-based adhesives are slowly disappearing from the market. They are still being used, but they are harmful to health. Respiratory protection and gloves should be used during application.

### ADHESIVES OVERVIEW:

All RENOLIT ALKORCELL laminates are primed (Finish 897/..) and suitable for:

Adhesives:	Hot melts, mainly for wrapping			Dispersion adhesives (2,5D)	Dispersion adhesives, mainly for flat lamination		
	PUR	PO	EVA	2c - PUR	UF + curing agent	EVA	PVAc (+curing agent)
Curing:	Chemical	Physical	Physical	Chemical	Chemical	Physical	Chemical
Application:	Slot nozzle Roller	Slot nozzle Roller	Slot nozzle Roller	Spray nozzle	2-4 roller application	2-4 roller application	2-4 roller application
Application temperature:	120-140 °C	~180 °C	~180 °C	Thermal lamination 80-120 °C; cold lamination 20 °C			
Coating weight:	According to the recommendations of the adhesive manufacturers						
Temperature resistance:	120-130 °C	100-110 °C	70-80 °C	~80 °C	~100 °C	80-90 °C	~100 °C
Water resistance: (DIN/EN 204)	D3	D2	D2	D2	D4	D2	D3 (D4)
	Standard	Standard	On request	On request	On request	Standard	Standard

## ADHESIVE SUPPLIERS FOR ALL TECHNOLOGIES



## SERVICE

### CENTRAL TECHNICAL SUPPORT (CTS)

RENOLIT's Central Technical Support provides worldwide support to customers from a wide range of industrial sectors for all application-related queries. Whether for questions regarding colour selection, problems with processing or optimisation of the production process - RENOLIT service technicians are available to provide advice and support.

#### CTS OFFERS THE FOLLOWING SERVICES:

- Selection of the right product from the extensive RENOLIT product portfolio
- Providing worldwide processing expertise
- Access to an interdisciplinary network of manufacturers of adhesives, substrates and machines
- ensuring correct processing through the use of products suitable for the process
- Testing of the finished product in line with market requirements
- Offering a system solution that complies with the latest national and international standards

#### CONTACT DETAILS FOR THE HEAD OF CTS:

Joachim Mundt  
Head of Central Technical Support Interior Surfaces

RENOLIT SE Plant Munich  
Morgensternstraße 9  
81479 Munich | Germany  
Phone: +49. 89.74917.588  
Fax: +49. 89.74917.380  
Mobile: +49.170.4474525  
[joachim.mundt@renolit.com](mailto:joachim.mundt@renolit.com)  
[www.renolit.com/interiorsurfaces](http://www.renolit.com/interiorsurfaces)

## SERVICE

### INTERIOR DESIGN SERVICES

#### Design Development

Design consultancy and development play a central role at RENOLIT and form the basis of our success. We are committed to providing our customers with contemporary decors and preparing for tomorrow's trends today. Because we are deeply involved in design, we know the market and understand what inspires our customers. You have the opportunity to select decors from our extensive design pool or for a minimum order quantity, we can develop your own exclusive design. Our worldwide design teams can work with you in your own national language.



Design development

#### Trendservice Colour Road

What trends are coming? Which colours and designs pass, which ones stay? The „Colour Road Trendservice“ helps to keep up with rapidly changing style worlds and to gain a head start on emerging trends. The correct assessment of future trends and having the right colour at the right time plays a crucial role in the buying decision.

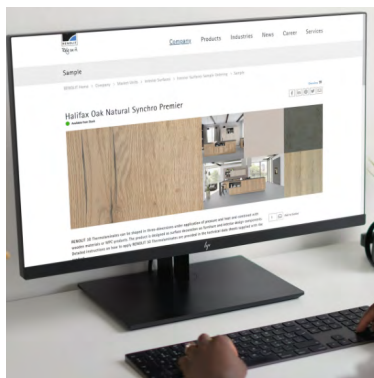
We work closely with international trend institutes and colour designers to analyse the diverse relationships between society and culture, environment and design and to filter out the main trends. Our Colour Road Team derives global colour trends and specific industry trends from these and presents them in annual trend reports.



Trendservice Colour Road

## SERVICE

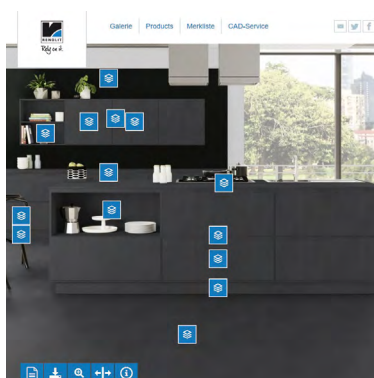
### DIGITAL SERVICES



Online collection

#### Online collection

Find out about product features, applications and get inspired by matching colour combinations. Find out more, and order samples at [interiorcollection.renolit.com](http://interiorcollection.renolit.com).



Produkt Configurator

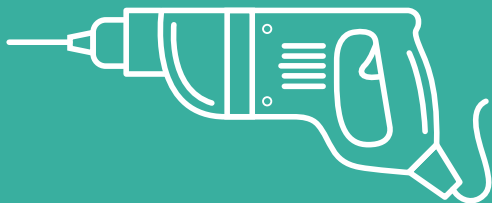
#### Product Configurator

To help you decide on the perfect décor, use our product configurator. It allows you to simulate all decors from the stock programme in the most popular settings, such as kitchen, bathroom or interior doors. The image with a chosen decor can be saved and shared, so you can see every decor in the room scene. This will give you inspiration and show you the possibilities of the various decors.

Let your imagination run free and experience the product configurator at [renolit.it/inspire](http://renolit.it/inspire)



## PRODUCT DESCRIPTION



## PRODUCT DESCRIPTION

### RENOLIT ALKORCELL

Solid S40.60.03 | Printed S40.60.04 | Metallic S40.60.06 | Printed Metallic S40.60.09  
Nominal Thickness 0.10; 0.12; 0.15; 0.18 mm

## GENERAL DESCRIPTION

RENOLIT ALKORCELL is a decorative finish foil for interior use based on polypropylene (PP). It is suitable for the surface coating of wood based substrates and is used in the production of furniture elements. A lacquer finish<sup>\*1</sup> provides the foil with the characteristics required for these applications.

## PROPERTIES<sup>\*2</sup>

Chemical resistance	class 1 C	DIN 68861/1
Abrasion resistance <sup>*3</sup>	min. 400 turns	Taber abrasor CS 10
Water resistance	long-term exposure	no change
Dry heat <sup>*4</sup>	class 7 C (= 100° C)	DIN 68861/7
Wet heat <sup>*4</sup>	class 8 B (= 70° C)	DIN 68861/8
Light fastness	≥ 6	DIN EN ISO 4892-2 DIN EN ISO 105 B 02

## MODE OF DELIVERY

Roll length	800 lm
Standard width	1,300 mm / 1,400 mm
Min. quantity for the first / following order	5,000 lm / 10,000 lm

## STORAGE CONDITIONS

- Store in a dry clean environment at room temperature with moderate humidity. The material can be suspended in unopened packaging. Store away from sources of heat and sunlight.
- Material should be acclimatised 72 hours prior to use at room temperature (about 20° C).
- Shelf life: about 12 months

# PRODUCT DESCRIPTION

## RENOLIT ALKORCELL

### PROCESSING

RENOLIT ALKORCELL is suitable for flat lamination (1D) and wrapping (min. thickness 0,12 mm, e.g. for profiles or 2D-parts).

- Finishes 922/xx, 987/xx and 989/xx facilitates the use of dispersion glue, hot-melt adhesives and solvent-based adhesives
- Finish 995/xx is only suitable for dispersion glues (antistatic primer).
- Recommendations for the use of additional finishes are available on demand.
- Films without a bonding agent on the reverse side require special care from the processor with regard to the choice of the adhesive and the achievement of sufficient surface tension on the reverse side of the film; if necessary, this can be achieved with corona treatment.

While wrapping a radius of  $\leq 3$  mm specific machine settings might be required.

### CLEANING

- Use mild cleaning solutions.
- Do not use abrasive cleaners, solvents, polishes, waxes or steam cleaning tools.
- As a precaution to test the suitability of a cleaning product, apply to an inconspicuous area, minimizing the time of exposure and the amount of cleaning agent (diluting as recommended by the supplier) in order to prevent any damage to the surface.

### ENVIRONMENT

RENOLIT ALKORCELL is based on polypropylene (PP), the formulation is free from halogens, plasticisers and formaldehyde. In the manufacture of RENOLIT ALKORCELL, environmentally friendly pigments are used in preference. Low-pollution waste disposal by incineration is possible.

### TECHNICAL STATUS 2022

This technical information sheet represents our latest state of knowledge and shall inform without obligation. The herein stated details do not release the manufacturer of our products from their own inspections and tests, which must correspond with the relevant national guidelines for its individual intended purpose. Especially it is the duty of the customer to control if the purchased product is suitable for its intended purpose.

---

<sup>\*1</sup> Exception: Foils without finish and with finish 961/xx, 965/xx and 968/xx

<sup>\*2</sup> for foils without finish and with finish 961/xx, 965/xx and 968/xx the mentioned properties cannot be confirmed, only complete finished foils are tested to be confirmed

<sup>\*3</sup> tested with flat embossings

<sup>\*4</sup> Does not apply for S40.60.06 and S40.60.09

## PRODUCT DESCRIPTION

### RENOLIT ALKORCELL<sup>r</sup>

Solid S40.60.33 | Printed S40.60.34 | Stereoprint S40.60.35 | Metallic S40.60.36 | Printed Metallic S40.60.39  
Nominal Thickness 0.10; 0.12; 0.15; 0.18 mm

## GENERAL DESCRIPTION

RENOLIT ALKORCELL<sup>r</sup> is a decorative finish foil for interior use based on polypropylene (PP) and a proportion of post-consumer recyclate. It is suitable for the surface coating of wood based substrates and is used in the production of furniture elements. A lacquer finish 1 provides the foil with the characteristics required for these applications.

## PROPERTIES<sup>2</sup>

Chemical resistance	class 1 C	DIN 68861/1
Abrasion resistance <sup>*3</sup>	min. 400 turns	Taber abrasor CS 10
Water resistance	long-term exposure	no change
Dry heat <sup>4</sup>	class 7 C (= 100° C)	DIN 68861/7
Wet heat <sup>4</sup>	class 8 B (= 70° C)	DIN 68861/8
Light fastness	≥ 6	DIN EN ISO 4892-2 DIN EN ISO 105 B 02

## MODE OF DELIVERY

Roll length	800 lm
Standard width	1.300 mm, 1.400 mm
Min. quantity for the first / following order	5.000 lm / 10.000 lm

## STORAGE CONDITIONS

- Store in a dry clean environment at room temperature with moderate humidity. The material can be suspended in unopened packaging. Store away from sources of heat and sunlight.
- Material should be acclimatised 72 hours prior to use at room temperature (about 20°C).
- Shelf life: about 12 months

# PRODUCT DESCRIPTION

## RENOLIT ALKORCELL<sup>r</sup>

### PROCESSING

RENOLIT ALKORCELL<sup>r</sup> is suitable for flat lamination (1D) and wrapping (min. thickness 0,12 mm, e.g. for profiles or 2D-parts).

- Finishes 922/xx, 987/xx and 989/xx are ensuring good bonding with dispersions, hotmelts and solvent based adhesives (universal primer).
- Finish 995/xx is only suitable for dispersion glues (antistatic primer).
- Recommendations for the use of additional finishes are available on demand.
- Foils without primer on the backside are requesting from the processor high accurateness concerning choosing the right adhesive as well as controlling and ensuring carefully the needed surface tension! Potentially the processor needs to Corona-treat the back side of the foil!

While wrapping a radius of  $\leq 3$  mm specific machine settings might be required.

### CLEANING

- Use mild cleaning solutions.
- Do not use abrasive cleaners, solvents, polishes, waxes or steam cleaning tools.
- As a precaution to test the suitability of a cleaning product, apply to an inconspicuous area, minimizing the time of exposure and the amount of cleaning agent (diluting as recommended by the supplier) in order to prevent any damage to the surface.

### ENVIRONMENT

RENOLIT ALKORCELL<sup>r</sup> is based on polypropylene (PP), the formulation is free from halogen components, plasticisers and formaldehyde. Environmentally compatible pigments are preferably in production. Low-pollutant waste disposal by incineration is possible.

### TECHNICAL STATUS 2022

This technical information sheet represents our latest state of knowledge and shall inform without obligation. The herein stated details do not release the manufacturer of our products from their own inspections and tests, which must correspond with the relevant national guidelines for its individual intended purpose. Especially it is the duty of the customer to control if the purchased product is suitable for its intended purpose.

---

<sup>1</sup> Exception: Foils without finish and with finish 961/xx, 965/xx and 968/xx  
<sup>2</sup> for foils without finish and with finish 961/xx, 965/xx and 968/xx the mentioned properties cannot be confirmed, only complete finished foils are tested to be confirmed  
<sup>3</sup> tested with flat embossings  
<sup>4</sup> Does not apply for S40.60.06 and S40.60.09

## PRODUCT DESCRIPTION

# RENOLIT ALKORCELL MASTEREMBOSS

Printed S40.69.04 I Finish 987/xx  
Nominal Thickness 0.12 mm and 0.15 mm

## GENERAL DESCRIPTION

RENOLIT ALKORCELL MasterEmboss is a decorative finish foil for interior use based on polypropylene (PP). The outstanding advantages of this material are founded in the combination of a special printing and embossing technique in which the deep pore structure and printed design are perfectly matched. Main application of RENOLIT ALKORCELL MasterEmboss is surface lamination of wood based substrates for products as furniture parts, panels and caravan interiors etc. A duromer lacquer finish provides the foil with the characteristics required for these applications.

## PROPERTIES

Chemical resistance	class 1 C	DIN 68861/1
Abrasion resistance	min. 400 turns	Taber abrasor CS 10
Water resistance	long-term exposure	no change
Dry heat	class 7 C (= 100° C)	DIN 68861/7
Wet heat	class 8 B (= 70° C)	DIN 68861/8
Light fastness	≥ 6	DIN EN ISO 4892-2 DIN EN ISO 105 B 02

## MODE OF DELIVERY

Roll length	500 – 600 lm
Standard width	1,300 mm / 1,400 mm
Min. quantity for the first / following order	5,000 lm / 10,000 lm

## STORAGE CONDITIONS

- Store in a dry clean environment at room temperature with moderate humidity. The material can be suspended in unopened packaging. Store away from sources of heat and sunlight.
- Material should be acclimatised 72 hours prior to use at room temperature (about 20°C).
- Shelf life: about 12 months

## PRODUCT DESCRIPTION

# RENOLIT ALKORCELL MASTEREMBOSS

## PROCESSING

RENOLIT ALKORCELL MasterEmboss is suitable for flat lamination (1D) and profile wrapping (2D). To be able to process RENOLIT ALKORCELL MasterEmboss with most well known glueing systems, a primer is applied on the backside. Finish 987/.. ensures a save adhesion with dispersion glues, hotmelts and solvent based adhesives.

While wrapping a radius of  $\leq 3$  mm specific machine settings might be required.

## CLEANING

- Use mild cleaning solutions.
- Do not use abrasive cleaners, solvents, polishes, waxes or steam cleaning tools.
- As a precaution to test the suitability of a cleaning product, apply to an inconspicuous area, minimizing the time of exposure and the amount of cleaning agent (diluting as recommended by the supplier) in order to prevent any damage to the surface.

## ENVIRONMENT

RENOLIT ALKORCELL MasterEmboss is based on polypropylene (PP), the formulation is free from halogens, plasticisers and formaldehyde. In the manufacture of RENOLIT ALKORCELL, environmentally friendly pigments are used in preference. Low-pollution waste disposal by incineration is possible.

## TECHNICAL STATUS 2022

This technical information sheet represents our latest state of knowledge and shall inform without obligation. The herein stated details do not release the manufacturer of our products from their own inspections and tests, which must correspond with the relevant national guidelines for its individual intended purpose. Especially it is the duty of the customer to control if the purchased product is suitable for its intended purpose.

## PRODUCT DESCRIPTION

# RENOLIT ALKORCELL MASTEREMBOSS PRINTED SYNCHRO

Printed S40.69.34 I Finish 987/xx  
Nominal Thickness 0.12 mm and 0.15 mm

## GENERAL DESCRIPTION

RENOLIT ALKORCELL MasterEmboss Printed Synchro is a decorative finish foil for interior use based on polypropylene (PP). The outstanding advantages of this material are founded in the combination of extra ordinary printing quality and unique embossings as well as in the synchronising of both. Main application of RENOLIT ALKORCELL MasterEmboss Printed Synchro is surface lamination of wood based substrates for products as furniture parts, panels and caravan interiors etc.

A duromer lacquer finish provides the foil with the characteristics required for these applications.

## PROPERTIES

Chemical resistance	class 1 C	DIN 68861/1
Abrasion resistance	min. 400 turns	Taber abrasor CS 10
Water resistance	long-term exposure	no change
Dry heat	class 7 C (= 100° C)	DIN 68861/7
Wet heat	class 8 B (= 70° C)	DIN 68861/8
Light fastness	≥ 6	DIN EN ISO 4892-2 DIN EN ISO 105 B 02

## MODE OF DELIVERY

Roll length	500 – 600 lm
Standard width	1,300 mm, 1,400 mm
Min. quantity for the first / following order	5,000 lm / 10,000 lm

## STORAGE CONDITIONS

- Store in a dry clean environment at room temperature with moderate humidity. The material can be suspended in unopened packaging. Store away from sources of heat and sunlight.
- Material should be acclimatised 72 hours prior to use at room temperature (about 20°C).
- Shelf life: about 12 months



# PRODUCT DESCRIPTION

## RENOLIT ALKORCELL MASTEREMBOSS PRINTED SYNCHRO

### PROCESSING

RENOLIT ALKORCELL MasterEmboss Printed Synchro is suitable for flat lamination (1D) and profile wrapping (2D). To be able to process RENOLIT ALKORCELL MasterEmboss with most well known glueing systems, a primer is applied on the backside. Finish 987/.. ensures a save adhesion with dispersion glues, hotmelts and solvent based adhesives.

While wrapping a radius of  $\leq 3$  mm specific machine settings might be required.

### CLEANING

- Use mild cleaning solutions.
- Do not use abrasive cleaners, solvents, polishes, waxes or steam cleaning tools.
- As a precaution to test the suitability of a cleaning product, apply to an inconspicuous area, minimizing the time of exposure and the amount of cleaning agent (diluting as recommended by the supplier) in order to prevent any damage to the surface.

### ENVIRONMENT

RENOLIT ALKORCELL MasterEmboss Printed Synchro is based on polypropylene (PP), the formulation is free from halogen components, plasticisers and formaldehyde. Environmentally compatible pigments are preferably in production. Low-pollutant waste disposal by incineration is possible.

### TECHNICAL STATUS 2022

This technical information sheet represents our latest state of knowledge and shall inform without obligation. The herein stated details do not release the manufacturer of our products from their own inspections and tests, which must correspond with the relevant national guidelines for its individual intended purpose. Especially it is the duty of the customer to control if the purchased product is suitable for its intended purpose.

# PRODUCT DESCRIPTION

## RENOLIT ALKORCELL MASTERGLOSS PRINTED

Printed S40.68.04 I Finish 969/40  
Nominal Thickness 0.25 mm

### GENERAL DESCRIPTION

RENOLIT ALKORCELL MasterGloss printed is a decorative finish foil for interior use based on polypropylene (PP) with a high-gloss surface. It is suitable for coating wooden materials, such as medium density fiberboard (MDF), and can be used for the production of furniture elements, especially the so-called 2-D-coated furniture panels.

### PROPERTIES

Gloss level	≥ 80	DIN 67530; 60° measuring head
Chemical resistance	class 1 C	DIN 68861/1
Scratch resistance	class 4 F (≤ 0,5 N)	DIN 68861/4
Dry heat	class 7 D (= 70°C)	DIN 68861/7
Wet heat	class 8 B (= 70°C)	DIN 68861/8
Light fastness	≥ 6	DIN EN ISO 4892-2 DIN EN ISO 105 B 02

### STORAGE CONDITIONS

- Store in a dry clean environment at room temperature with moderate humidity. The material can be suspended in unopened packaging. Store away from sources of heat and sunlight.
- Material should be acclimatised 72 hours prior to use at room temperature (about 20°C).
- Shelf life: with PE protection film about 3 months.

### PROCESSING

RENOLIT ALKORCELL MasterGloss printed is suitable for wrapping (2D) and laminating (1D). If profiles with a radius of ≤ 3 mm are wrapped specific machine adjustments might be needed.

RENOLIT ALKORCELL MasterGloss printed will be supplied with a PE protective film which should only be removed after the furniture has been assembled at the customer's premises, so as to protect the high-gloss surface against mechanical stress. Whatever processing technique will be applied it must be ensured that it does not affect the foil properties (e.g. the glue application pattern).

The back of the foil is coated with a primer which facilitates the use of dispersion glue, hot-melt adhesives and solvent-based adhesives. The best surface will be achieved with PUR hot-melt adhesives.

## PRODUCT DESCRIPTION

# RENOLIT ALKORCELL MASTERGLOSS PRINTED

## SURFACE QUALITY

The quality of the high-gloss surface corresponds to that of the sampled product. Preliminary tests must be carried out to determine whether the surface quality corresponds to the intended application. Before processing, every shipping roll of the delivered product must be checked regarding gloss and color in comparison to the agreed master sample. Slight deviations in gloss and print intensity cannot be avoided due to our production technology.

## ENVIRONMENT

RENOLIT ALKORCELL MasterGloss printed is based on polypropylene (PP), the formulation is free from halogen components, plasticisers and formaldehyde. Environmentally compatible pigments are preferably in production. Low-pollutant waste disposal by incineration is possible.

## CLEANING

Stains should be removed with warm, diluted soap solution if necessary in combination with a sponge (do not use the abrasive surface of cleaning sponges). Dilutions of all sorts of commercially available cleaners for plastic surfaces consisting of ionic or non ionic detergents are usable. After cleaning, the surface has to be rinsed with clear water and dried with a soft cloth. As a precaution to test the suitability of a cleaning product, apply to an inconspicuous area, minimizing the time of exposure and the amount of cleaning agent (diluting as recommended by the supplier) in order to prevent any damage to the surface.

The cleaner used should not be abrasive, i.e. contain abrasive particles often used for example in scrubbing-powders or scrubbing-milks. These particles can leave scratches on the surface and thus alter the gloss of the surface.

The cleaner should not contain oxidative substances (chlorates, perborates or other bleaching agents) or strong alkalines (conc. ammonia, sodium hydroxide solutions). The cleaner should not contain „care“ substances like waxes or polymer dispersions which will remain on the surface after drying. This will probably alter the gloss level of the film and these residues are not easy to remove in subsequent cleaning operations. (This is often the case with cleaners used for flooring). Care substances for wood like polishes and pastes normally contain oils and/or waxes of different origin and other substances which normally will seal the porous or slightly damaged surface of wood. Those substances are able to swell plastics and can cause discolouration. Near the edges delamination is possible due to swelling of the glue joint. Therefore these materials are excluded from use on RENOLIT ALKORCELL MasterGloss printed foils.

Steam cleaning tools are also not suitable. Stains which cannot be removed with diluted soap solution described above can be removed with diluted ethanol or cleaners containing alcohol (e.g. window cleaner) after first testing the result at an unnoticeable surface area. The exposure time should be as short as possible not using excessive pressure. The use of concentrated alcohols (methylated spirit, isopropanole) should be avoided.

## TECHNICAL STATUS 2022

This technical information sheet represents our latest state of knowledge and shall inform without obligation. The herein stated details do not release the manufacturer of our products from their own inspections and tests, which must correspond with the relevant national guidelines for its individual intended purpose. Especially it is the duty of the customer to control if the purchased product is suitable for its intended purpose.

## PRODUCT DESCRIPTION

### RENOLIT ALKORCELL PHONO

Solid S40.62.03 | Printed S40.62.04  
Finish 987/xx

## GENERAL DESCRIPTION

Due to the increased problem of waste disposal of PVC laminated cabinets we developed as an alternative our foil RENOLIT ALKORCELL PHONO based on polypropylene (PP) for interior application.

The processing properties are nearly the same like PVC-foils. The usual technologies for producing cabinets, such as wrapping and V-grooving can be used.

## PROPERTIES

Thickness range	0.15 to 0.40 mm	Nominal Thickness
Tensile strength	≥ 30/20 N/mm <sup>2</sup>	DIN 53455, longitudinal/crosswise
Dimension stability	≤ 1%	1h / 80°C, circulating air oven
Hardness	70 shore D	DIN 53505 D 10s
Adhesive	can be bonded with dispersion-, hotmelt- and solvent-glue	
Other	elastic and minimized whitening	
Application	interior use	

## MODE OF DELIVERY

	Stock Items	MTO
Thickness	0.18 mm ( SP Black 0.15mm )	0.10 – 0.40 mm
Roll length	500 lm	≥ 500 lm
Width	1,260 mm	≤ 1,500 mm
Min. order quantity	one pallet (~2,000 lm)	10,000 lm

## STORAGE CONDITIONS

- Store in a dry clean environment at room temperature with moderate humidity. The material can be suspended in unopened packaging. Store away from sources of heat and sunlight.
- Material should be acclimatised 72 hours prior to use at room temperature (about 20°C).
- Shelf life: about 12 months

## PRODUCT DESCRIPTION

# RENOLIT ALKORCELL PHONO

## CLEANING

- Use mild cleaning solutions.
- Do not use abrasive cleaners, solvents, polishes, waxes or steam cleaning tools.
- As a precaution to test the suitability of a cleaning product, apply to an inconspicuous area, minimizing the time of exposure and the amount of cleaning agent (diluting as recommended by the supplier) in order to prevent any damage to the surface.

## ENVIRONMENT

RENOLIT ALKORCELL PHONO is based on polypropylene (PP), the formulation is free from halogen components, plasticisers and formaldehyde. Environmentally compatible pigments are preferably in production. Low-pollutant waste disposal by incineration is possible. The foil complies with ROHS- and REACH-regulations.

## TECHNICAL STATUS 2022

This technical information sheet represents our latest state of knowledge and shall inform without obligation. The herein stated details do not release the manufacturer of our products from their own inspections and tests, which must correspond with the relevant national guidelines for its individual intended purpose. Especially it is the duty of the customer to control if the purchased product is suitable for its intended purpose.

## PRODUCT DESCRIPTION

### RENOLIT ALKORCELL PREMIER MATT

Solid S40.67.23

Nominal Thickness 0.12, 0.15 and 0.18 mm | Finish 969/86

## GENERAL DESCRIPTION

RENOLIT ALKORCELL Premier Matt is a decorative finish foil for interior use on basis Polypropylene (PP) with a matt surface. Herewith exclusive, matt surfaces can be realized in only one working step, without cost intensive repeated sanding and lacquering procedures. RENOLIT ALKORCELL Premier Matt is suitable for coating wooden materials, such as medium density fiberboard (MDF), and can be used for the production of furniture elements, especially the so-called 2-D-coated furniture panels.

## PROPERTIES

Chemical Resistance	1 B <sup>1</sup>	DIN EN 12720 Evaluation acc. to DIN 68861/1
Abrasion resistance	min. 400 turns	Taber abrasor CS 10
Resistance against Micro Scratching [%]	≤ 25 % alteration of gloss	DIN CEN/TS 16611, Method A
Resistance against Micro Scratching	Classe 5	DIN CEN/TS 16611, Method B
Resistance against Scratching [N]	4 D (> 1,0 to ≤ 1,5 N) <sup>2</sup>	DIN EN 15186, Method B Evaluation acc. to DIN 68861/4
Resistance against Dry Heat [°C]	Level 5 at 70°C <sup>3</sup>	DIN EN 12722
Resistance against Wet Heat [°C]	Level 5 at 70°C <sup>3</sup>	DIN EN 12721
Glosslevel	dark/intensive colours: 3 +/- 1 light colours: 4 +/- 1	DIN EN ISO 4892-2 DIN EN ISO 105 B 02
Light Fastness	≥ 7	DIN EN ISO 4892-2 DIN EN ISO 105 B 02

<sup>1</sup> Assessment with finished furniture parts.

<sup>2</sup> Exception colourful tones (e.g. yellow, red, blue, green) fulfill 4 E (> 0,5 to ≤ 1,0 N).

<sup>3</sup> Temperature of the aluminium testing equipment.

## STORAGE CONDITIONS

- Store in a dry clean environment at room temperature with moderate humidity. The material can be suspended in unopened packaging. Store away from sources of heat and sunlight.
- Material should be acclimatised 72 hours prior to use at room temperature (about 20°C).
- Shelf life: about 12 months

## PRODUCT DESCRIPTION

# RENOLIT ALKORCELL PREMIER MATT

## PROCESSING

RENOLIT ALKORCELL Premier Matt is suitable for wrapping (2D) and laminating (1D).

If profiles with a radius of  $\leq 2$  mm are wrapped specific machine adjustments might be needed.

The back of the foil is coated with a primer which facilitates the use of dispersion glue, hot-melt adhesives and solvent-based adhesives. The best surface will be achieved with PUR hot-melt adhesives.

## ENVIRONMENT

RENOLIT ALKORCELL Premier Matt is a Polypropylene foil which is fulfilling the actual REACH-requirements.

The formulation is free of

- halogenes, plasticizers, formaldehyde and
- heavy metals (chrome (VI), cadmium, lead, mercury)

## CLEANING

- Use mild cleaning solutions.
- Do not use abrasive cleaners, solvents, polishes, waxes or steam cleaning tools.
- As a precaution to test the suitability of a cleaning product, apply to an inconspicuous area, minimizing the time of exposure and the amount of cleaning agent (diluting as recommended by the supplier) in order to prevent any damage to the surface.

## TECHNICAL STATUS 2022

This technical information sheet represents our latest state of knowledge and shall inform without obligation. The herein stated details do not release the manufacturer of our products from their own inspections and tests, which must correspond with the relevant national guidelines for its individual intended purpose. Especially it is the duty of the customer to control if the purchased product is suitable for its intended purpose.

## PRODUCT DESCRIPTION

# RENOLIT ALKORCELL SUPERMATT

Solid S40.67.03 | Finish 922/xx  
Nominal Thickness 0.20 mm

## GENERAL DESCRIPTION

RENOLIT ALKORCELL SuperMatt is a decorative finish foil for interior use based on polypropylene (PP) with a silky-matt surface. It is suitable for coating wooden materials, such as medium density fiberboard (MDF), and can be used for the production of furniture components, especially the 2D-coated furniture panels.

## PROPERTIES

Gloss level	6 ( $\pm$ 1)	DIN 67530; 60° measuring head
Chemical resistance	class 1 B <sup>*1</sup>	DIN 68861/1
Scratch resistance	class 4 E (> 0.5 to $\leq$ 1.0 N)	DIN 68861/4
Abrasion resistance	at least 400 turns	Taber abrasor CS 10
Water resistance	long-term exposure	no change
Dry heat	class 7 C (= 100° C)	DIN 68861/7
Wet heat	class 8 B (= 70° C)	DIN 68861/8
Light fastness	$\geq$ 6	DIN EN ISO 4892-2 DIN EN ISO 105 B 02

<sup>\*1</sup> with the exception of ethylalcohol, butter, mustard

## MODE OF DELIVERY

Roll length	500 lm
Standard width	1,300 mm / 1,400 mm
Min. quantity for the first / following order	5,000 lm / 10,000 lm

## STORAGE CONDITIONS

- Store in a dry clean environment at room temperature with moderate humidity.
- The material can be suspended in unopened packaging. Store away from sources of heat and sunlight.
- Material should be acclimatised 72 hours prior to use at room temperature (about 20°C).
- Shelf life: about 12 months.



## PRODUCT DESCRIPTION

# RENOLIT ALKORCELL SUPERMATT

## PROCESSING

RENOLIT ALKORCELL SuperMatt is suitable for wrapping (2D) and laminating (1D). If profiles with a radius of  $\leq 3$  mm are wrapped specific machine adjustments might be needed. Whatever processing technique will be applied it must be ensured that it does not affect the foil properties (e.g. the glue application pattern).

The back of the foil is coated with a primer which facilitates the use of dispersion glue, hot-melt adhesives and solvent-based adhesives. The best surface will be achieved with PUR hot-melt adhesives.

## SURFACE QUALITY

The quality of the silky-matt surface conforms to that of the samples. It should be established by way of preliminary tests, whether the surface quality is sufficient for the intended use.

## ENVIRONMENT

RENOLIT ALKORCELL SuperMatt is a polypropylene foil. The formulation of this foil is free of halogens, plasticizers and formaldehyde. In the manufacture of RENOLIT ALKORCELL Super-Matt, environmentally friendly pigments are used in preference. Low-pollution waste disposal by incineration is possible.

## CLEANING

- Use mild cleaning solutions.
- Do not use abrasive cleaners, solvents, polishes, waxes or steam cleaning tools.
- As a precaution to test the suitability of a cleaning product, apply to an inconspicuous area, minimizing the time of exposure and the amount of cleaning agent (diluting as recommended by the supplier) in order to prevent any damage to the surface.

## TECHNICAL STATUS 2022

This technical information sheet represents our latest state of knowledge and shall inform without obligation. The herein stated details do not release the manufacturer of our products from their own inspections and tests, which must correspond with the relevant national guidelines for its individual intended purpose. Especially it is the duty of the customer to control if the purchased product is suitable for its intended purpose.

# PRODUCT DESCRIPTION

## RENOLIT ALKORCELL RECOATABLE

S40.60.03 | Finish 968/47 and 968/43

### GENERAL DISCRPTION

RENOLIT ALKORCELL Recoatable is a furniture foil for interior use developed for the individual finishing of the customer. It is suitable for flat lamination and profile wrapping. For application with different kinds of adhesives the foil is provided with a primer on the backside suitable for dispersion, hotmelt and solvent based adhesives. For the realisation of lacquering and special lacquering effects RENOLIT ALKORCELL Recoatable is also coated with a primer on the front side of the foil. The primer on the front side also allows digital printing.

Without applying a suitable final finish by the processor RENOLIT ALKORCELL Recoatable has no using properties as required e.g. in the furniture industry.

### PROCESSING

RENOLIT ALKORCELL Recoatable can be finished with common lacquers and printing colours developed for polyolefines. In every case trials of the lacquering / printing company and the producer of the lacquer / printing colour are important: to find the right formulation, the best suitable application technique and to approve the testing results of the achieved properties.

Please pay attention to the following recommendations:

- before starting to paint / print RENOLIT ALKORCELL Recoatable make sure, that the glue is dry and has reached its full bonding strength, especially if you have a crosslinking system (normally about seven days)
- the foil is already covered with a primer on the front side therefore don't sand the surface of the foil
- cleaning of the surface before painting / printing: wet with a mild cleaning liquid as long as the printing colours are not attacked
- before painting / printing the surface has to be totally dry and free of any contamination/ pollution (dust particles ...)
- paint / printing colours are available to realize a finished product just with one working step and just with one layer of paint / print. To use more than one layer of paint / print, may be in addition to a primer sprayed before, increases the quality of the surface and reduces eventual problems with the foil, for example because of the influence of a high quantity of solvents.

## PRODUCT DESCRIPTION

### RENOLIT ALKORCELL RECOATABLE

## STORAGE CONDITIONS

- Store in a dry clean environment at room temperature with moderate humidity. The material can be suspended in unopened packaging. Store away from sources of heat and sunlight.
- Material should be acclimatised 72 hours prior to use at room temperature (about 20°C).
- Shelf life: about 12 months.

## TECHNICAL STATUS 2022

This technical information sheet represents our latest state of knowledge and shall inform without obligation. The herein stated details do not release the manufacturer of our products from their own inspections and tests, which must correspond with the relevant national guidelines for its individual intended purpose. Especially it is the duty of the customer to control if the purchased product is suitable for its intended purpose.



*Rely on it.*

**RENOLIT SE**

Market Unit Interior Surfaces  
Horchheimer Str. 50  
67547 Worms | Germany  
Phone: +49.6241.303.1222

[interiorsurfaces@renolit.com](mailto:interiorsurfaces@renolit.com)  
[renolit.com/interiorsurfaces](http://renolit.com/interiorsurfaces)