



The edgable
cladding
panel.

RENOLIT BENDIT.
For that certain bend.



Rely on it.

RENOLIT BENDIT combines.

RENOLIT BENDIT is an edging sheet that can be used to create panelling around a PVC-U window. Its surface consists of a surface coating film specially developed for this purpose. It is available in a selection of colours, designs and surface textures and features all the renowned strengths of RENOLIT EXOFOL, such as easy cleaning and Solar Shield Technology (SST).

With RENOLIT BENDIT, you can create seamless pillar and corner coverings, reveal and lintel panelling and many other solutions that look as if they have been cast from a single mould: with a visually seamless transition to the window profile or deliberately contrasting with the fabric of the building.

RENOLIT BENDIT product properties.



Exceptional thermal stability



Sustainable and durable



Appearance and texture like window film



High bending stability



UV and weather resistant



Universal application



Light weight

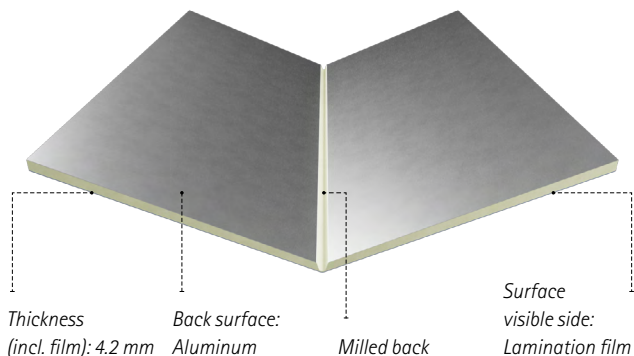


Flat panel surface

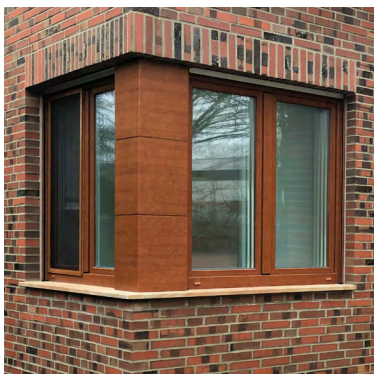
You can bend **RENOLIT BENDIT**

Schematic structure **RENOLIT BENDIT**

Panel size: 1.250 x 2.800 x 4,2 mm



Processing the high-quality cladding panel is extremely simple: mill a small groove into the back of the panel and you can bend **RENOLIT BENDIT** to the exact angle you need. Any angle up to 90 degrees is possible. The fold is positioned exactly where you want it, and the beautiful surface can withstand it all.



Further information
can be found at
www.renolit.com/bendit

RENOLIT SE

Market Unit Exterior Solutions
Horchheimer Str. 50
67547 Worms | Germany
Phone: +49.6241.94031.13
folienservice@renolit.com

exteriorsolutions@renolit.com
www.renolit.com/exteriorsolutions

vinyl^{plus}



Rely on it.