



Rely on it.

User Manual

RENOLIT DUALFIX










EXCELLENCE
IN ROOFING

How to use the roofing adhesive **RENOLIT DUALFIX**



Considerations before use.

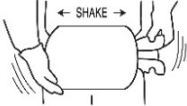
- 
 - Wear suitable personal protective equipment (protective gloves, eyewear and clothing, respiratory protection) at all times when using the glue and respect the protection measures recommended by **RENOLIT**.
- 
 - For optimal results the tank should be shaken before use and before attaching the dispensing accessories. Hold the tank horizontally and shake vigorously for a minimum of one minute.
- 
 - For safety reasons and to avoid loss of adhesive all connectors and valves should be closed before connecting or disconnecting the dispensing accessories.
- 
 - Before processing, a small bonding test should be carried out to verify if the adhesive is suitable for the application. A bonding of minimum 1N/mm is necessary.
- 
 - The adhesive is only permitted for outside use. Ambient and substrate temperature +1°C to +40°C. For optimal adhesive dispersing and spray pattern, the **RENOLIT DUALFIX** temperature at the time of application should be between +18°C and +25°C.
- 
 - The product is not intended for use on surfaces covered with standing water or in rainy conditions. Surfaces should be firm, clean and free of dust, grease or loose particles.
- 
 - Keep the unit clean and in a good operation condition. Only use original **RENOLIT DUALFIX** spare parts.

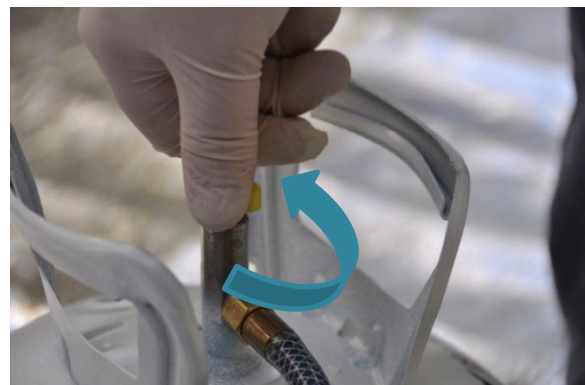


Bonding insulation boards

Application

Getting **RENOLIT DUALFIX** ready for use

1. Remove tank from the cardboard packaging. Shake vigorously for a minimum of one minute using a side-to-side motion before attaching hose. Shaking should be repeated after any break in application.
 
2. Attach the dispensing hose to the threaded part of the tank valve. Once it is seated properly, tighten securely.
3. Make sure the brass ON/OFF valve attached to the dispensing hose is in the OFF position.
4. Slowly open the valve at the top of the tank until it is completely open, **whilst checking for leaks**. If there are no leaks, the **RENOLIT DUALFIX** adhesive is ready for use.
5. Before dispensing **RENOLIT DUALFIX** adhesive, point the dispensing hose in empty carton for initial burst.
6. To dispense the adhesive, slowly move the ON/OFF valve towards the ON position. Flow may be controlled by this valve.
7. Dispense the **RENOLIT DUALFIX** onto the substrate. The spacing between beads should be 150 mm at the perimeter and 300 mm in the central roof area (width of bead 20 to 25 mm).
8. About 5 seconds before you want the flow of the adhesive to stop, close the valve by moving to its OFF position. It is normal for a small amount of adhesive to flow from the nozzle after the valve is closed.



NOTE. The dispensing pattern and the required distance between the beads may vary depending on building characteristics. For advice please contact **RENOLIT** Technical Dpt.

Applying insulation boards

The beads should run perpendicular to the larger section of the insulation boards. On steel decks the beads are placed on the top corrugations.

The insulation must be placed end-to-end with staggered joints in alternating rows. Set boards into the adhesive beads ideally within 3-5 minutes after dispensing the adhesive and, for maximum contact, walk on the boards immediately to spread the beads.

Continue to walk on the insulation boards every 5-7 minutes until the insulation is firmly attached. This can take approx. 20 to 45 minutes depending on humidity and ambient temperature.

Under low humidity conditions, the adhesive cures slower.



Tank is empty

After emptying a **RENOLIT DUALFIX** tank remove the dispensing accessory and attach to a new **RENOLIT DUALFIX** tank.

Close the tank valve, open the ON/OFF trigger valve to release residual pressure. Undo the dispensing hose from the tank and transfer to a new tank. Dispense some **RENOLIT DUALFIX** immediately.

Before disposal, open the tank valve to release any residual pressure and place the tank upside down in the original carton.

During short interruption in application

When not in use, including overnight, stand tank in vertical position, leave the tank valve open and close the dispensing kit making sure to leave adhesive in the hose length. If the end becomes blocked cut off approx. 10-25 mm until clear.

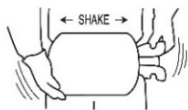


Bonding roofing membrane

Application

Getting **RENOLIT DUALFIX** ready for use

1. Remove tank from the cardboard packaging. Shake vigorously for minimum one minute using a side-to-side motion before attaching the accessory. Shaking should be repeated after any break in application.



2. Connect one flexible hose of the spray gun with the tank using the valve connection provided in the accessory kit. Once it is seated properly, tighten securely with the provided tool.
3. Connect the second flexible hose of the spray gun with the air compressor, using the quick connection valve provided with the accessory kit. Turn air compressor on 5 bars.
4. Mount a spray nozzle on the gun (locked position).
5. Slowly open the valve at the top of the tank until it is fully open, whilst checking for leaks. If there are no leaks, the **RENOLIT DUALFIX** adhesive is ready for use. Open the ON/OFF valve on the dispensing kit.
6. To dispense **RENOLIT DUALFIX**, fully pull the trigger of the gun. Flow may be controlled by adjusting air pressure and air flow.
7. Distance between the gun and the substrate should be ca. 30 – 50 cm. The amount of product is adjusted by visual control. Adhesive rate 130 g/m² - 160 g/m² depending on the substrate.



NOTE. The adhesive rate will be determined by the nature of the substrate. For advice please contact the **RENOLIT** Technical Dpt.

Applying the roofing membrane

The membrane is unrolled in its final position on the roof and folded away in half in the width direction. **RENOLIT DUALFIX** is sprayed on the substrate and covered within 4-9 with the part of the membrane which was folded away. A light and uniform pressure should be applied with a brush to eliminate any air blister and insure good contact between the substrate and the membrane. The same operation should be repeated with the other side of the membrane.

The membrane is usually firmly attached within 20-45 minutes depending on application conditions. Humidity and ambient temperature directly affects curing rate.

Under low humidity conditions, the adhesive cures slower.



Tank is empty

After emptying a **RENOLIT DUALFIX** tank remove the dispensing accessory and attach to a new **RENOLIT DUALFIX** tank.

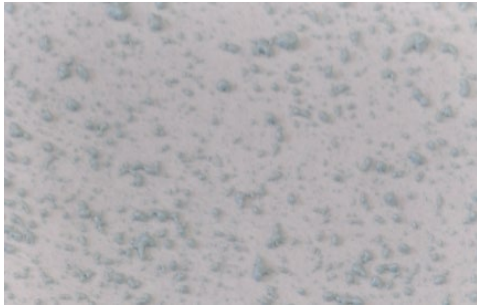
Close the tank valve. Fully pull the trigger of the gun to release residual pressure before closing the valve on the dispensing kit. Undo the dispensing hose from the tank and transfer to a new tank. Dispense some **RENOLIT DUALFIX** glue immediately.

Before disposal, open the tank valve to release any residual pressure and place the tank upside down in the original cardboard packaging.

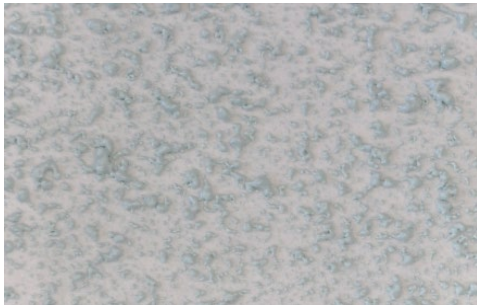
During short interruption in application

When not in use, including overnight, stand tank in vertical position, leave both the tank valve and the valve on the dispensing kit open making sure to leave adhesive in the hose length. Remove the nozzle and clean the spray gun with PU cleaner to prevent it from getting blocked.

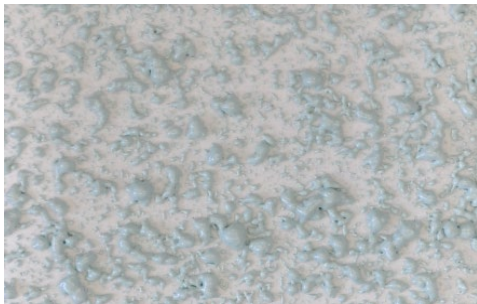
Visual inspection of adhesive rate and dispensing pattern



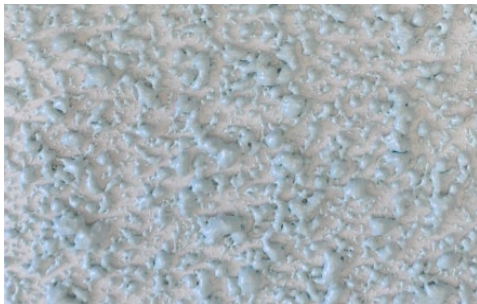
70 g/m²



100 g/m²



130 g/m²



160 g/m²



200 g/m²



Cleaning

- **Overnight cleaning (day-by-day use) is not required.** The tank valve should stay in the OPEN position making sure to leave adhesive in the complete hose length. For this purpose, set the ON/OFF valve of the insulation dispensing kit in the OFF position and the ON/OFF valve of the membrane dispensing kit in the ON position.
- **During any long interruption in application,** the tank valve is set in the OFF position, stored in vertical position and the dispensing kit is disconnected from the tank and firmly cleaned in order to prevent the premature loss/damage of the nozzle and spray hose.



Cleaning procedure.

1. Close tank valve.
2. Empty and release residual adhesive and pressure from the dispensing kit.
3. Wearing gloves and protective eyewear, undo the dispensing hose from the tank and transfer it to the cleaning kit (PU cleaner + connection piece). Tighten securely.
4. Clean the tank valve with PU cleaner to remove any residual adhesive.
5. Spray until the dispensing kit is clean and empty of adhesive (100% cleaner comes out of the hose/spray gun).
6. Disconnect the dispensing kit from the cleaner kit and store away.





Troubleshooting

There is no or little adhesive coming out of the gun

- There is no pressure on the unit.
- The unit is empty.
- The adhesive is too cold.

The spray pattern is irregular

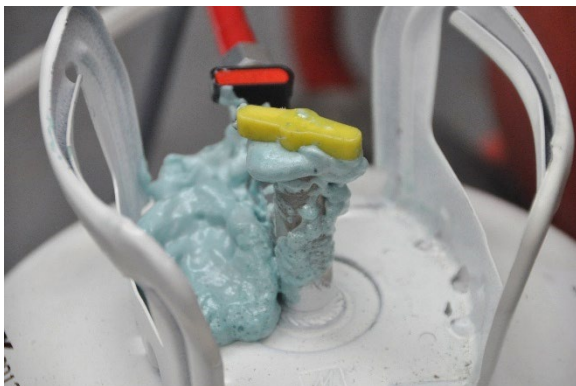
- Adjust the spraying pressure to the gun.
- The air nozzle is blocked. Change the air nozzle.
- The adhesive is too cold.
- There is not enough compressor capacity (minimum compressor capacity: 3HP)

Adhesive leaks out of the spray gun

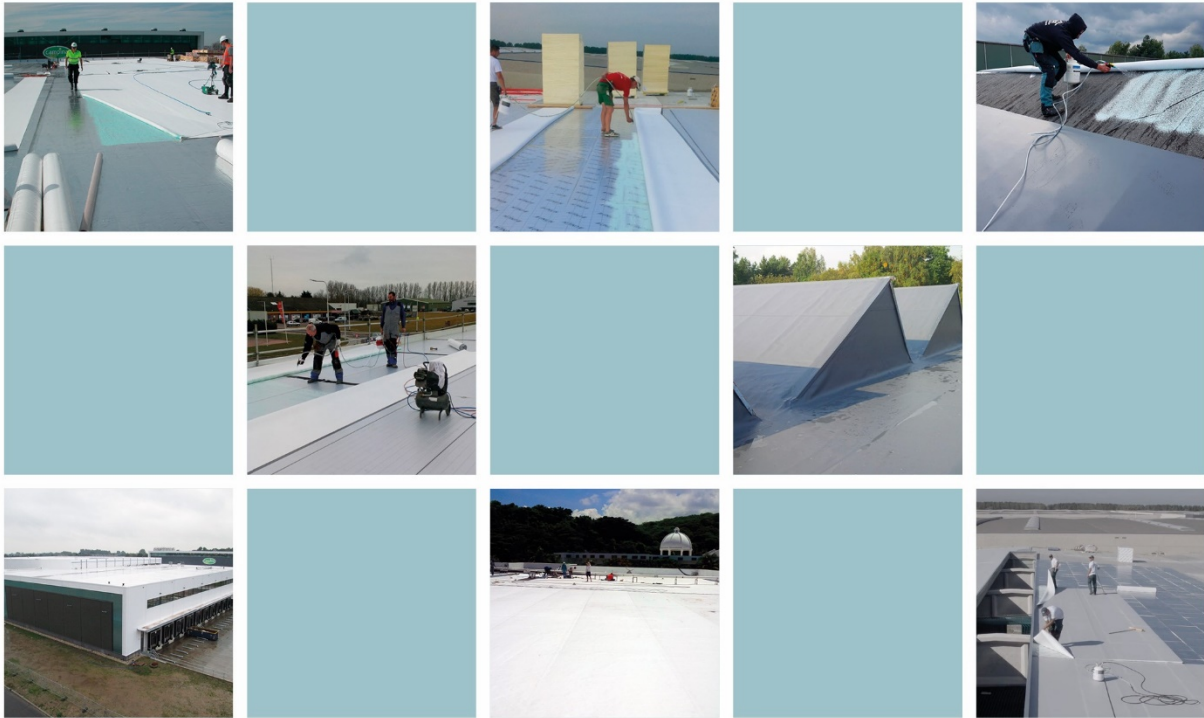


- Spray gun is damaged or dirty.

Adhesive leaks out of the connection to the dispensing hose



- Dispensing hose is not tightened properly to the threaded part of the tank valve.



www.renolit.com/roofing

RENOLIT Technical Dpt. Roofing - Industriepark De Bruwaan 43 – B - 9700 Oudenaarde
Tel.: +32 55 33 98 27 - Fax: +32 55 31 86 58 - technicalsupportroof@renolit.com

The information in this sales document is given in good faith. It is based on the current generally accepted state of the art. This information does not absolve users in any way of their obligation to comply with existing regulations, patents, statutory or local rules, technical approvals or the generally accepted rules of the trade. The purchaser is solely responsible for the end user of the product having correct information. **RENOLIT WATERPROOFING** cannot be held liable as a result of any disregard of regulations or instructions. In view of the fact that it is impossible to take account of all material circumstances and detailed problems, it is necessary in such cases to contact the **RENOLIT TECHNICAL DEPARTMENT** who will assist you with advice based on the information provided and available knowledge. Our warranty covering quality and functional behaviour of materials presented or listed in the system, is only in respect of the roofing membrane and ancillary materials which have been manufactured, supplied or approved by us.



Rely on it.